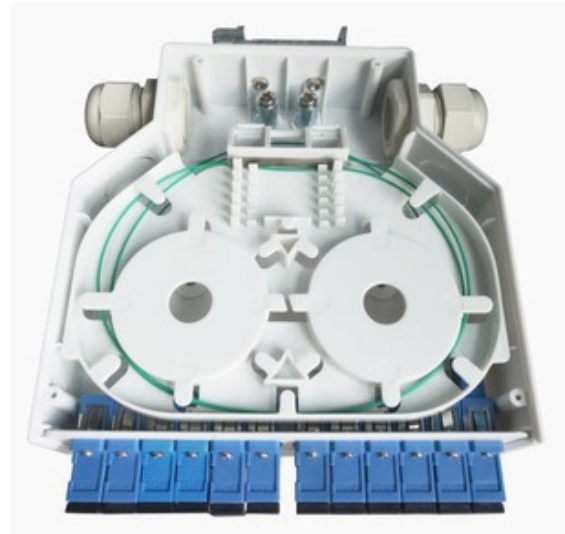




DESCRIPTION

Fiber optic DIN rail mounted terminal box is available for the distribution and terminal connection for various kinds of optical fiber system, especially suitable for mini-network terminal distribution, in which the optical cables, patch cores or pigtails are connected.



FEATURES

- Standard size, light weight and reasonable structure.
- Material: ABS, adapter plate: cold rolled steel.
- Cable splice tray can be overturn, easy to manage.
- Optional adapter and adapter plate.
- Din guide rail, easy to install on rack panel in cabinet.
- For rack frame with size: 482.6*88*180 mm and capacity 12 set.

APPLICATION

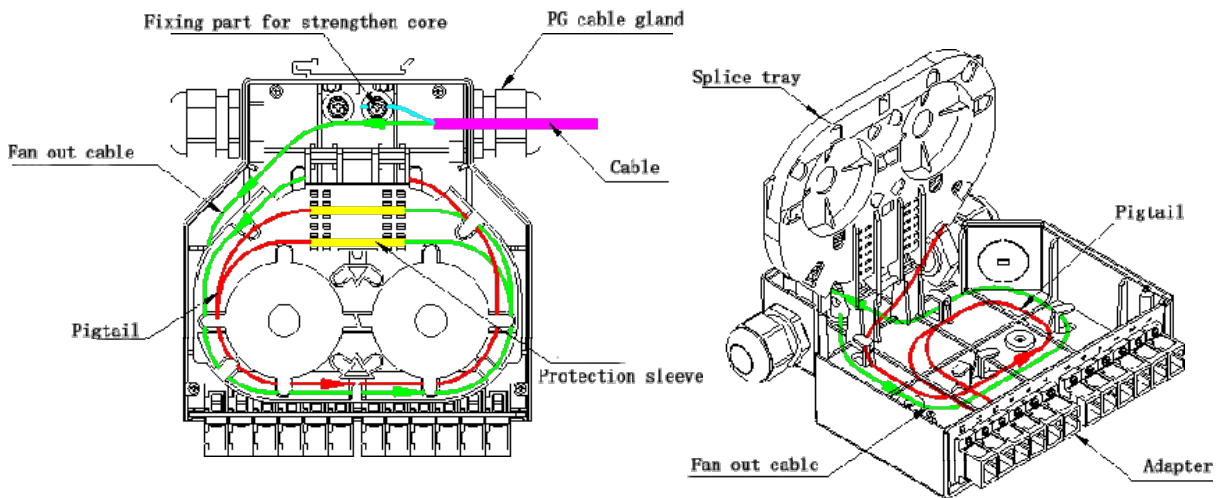
- Telecommunications subscriber loop
- Fiber to the home (FTTH)
- LAN/WAN
- CATV



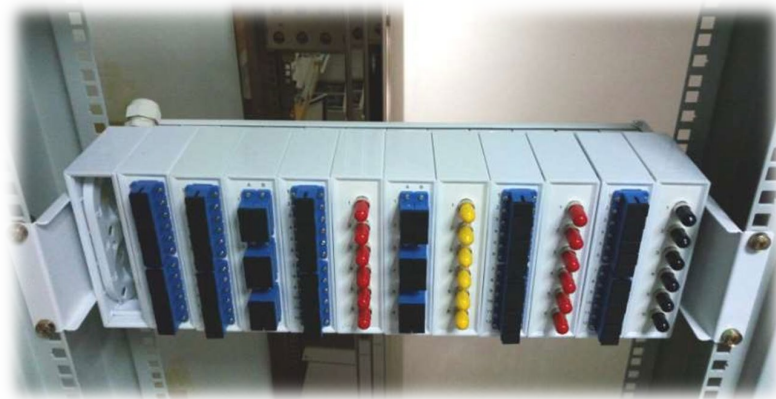
MODEL

Model	Adapter	Adapter Quantity	Core
CNFODB-DIN-12	SC simplex	12	12

CABLE MANAGEMENT



PICTURE



PACKING INFO

	Carton Size	G.W.	Remark
Inner box	16.5*15.5*4.5 cm	0.4 kg (around)	With bubble pack
External box	48.5*47*35 cm	24 kg (around)	60 sets/carton