

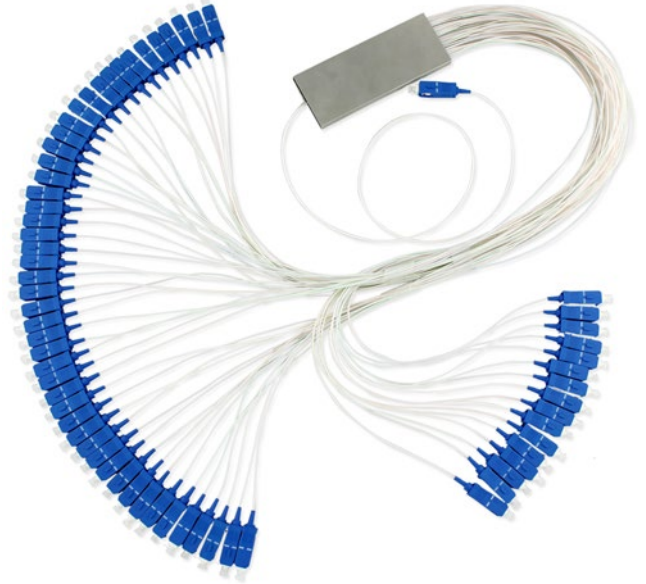


## PRODUCT FEATURES

- Low insertion loss, Low PDL and High reliability
- High return loss and good repeatability
- Wide wavelength range
- Excellent channel-to-channel uniformity

## APPLICATIONS

- LAN, WAN and Metro Networks
- FTTH project & FTTX Deployments
- CATV System
- GPON, EPON
- Fiber Optic Test Equipment
- Data-base Transmit Broadband Net



## ENCAPSULATION SIZE

Item	1x64
Length*Width*Height (mm)	100×40×6
Input	0.9mm
Output	0.9mm white/colorful loose tube
Fiber Length	1M



## SPECIFICATIONS

Item	1x64
Fiber Type	G657A1
Working Wavelength	1260nm~1650nm
Standard Insertion Loss (dB)	≤20.8
Uniformity (dB)	≤2.0
PDL (dB)	≤0.4
Wavelength Dependent Loss (dB)	≤2.0
Return Loss (dB)	≥50
Directivity (dB)	≥55
Operating Temp. Range	-40°C~ +85°C

## ORDERING INFORMATION

Product code	Splitting ratio	Fiber optic connector type	Cable output
CNPLC-164-SC1-SC1-BL	1x64	SC/UPC	Tight buffer 900um