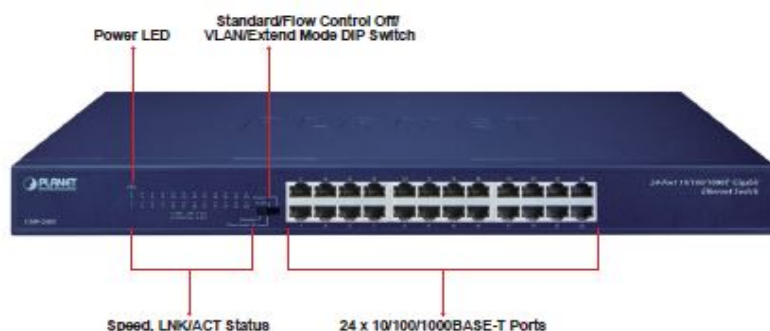


# 24-Port 10/100/1000BASE-T Gigabit Ethernet Switch



## Cost-effective Gigabit Solution for Enterprise Backbone and Data Center Networking

PLANET GSW-2401 Gigabit Ethernet Switch provides 24 RJ45 10/100/1000Mbps ports for high-speed network connectivity. It can automatically identify and determine the correct transmission speed and half/full duplex mode of the attached devices with its 24 Gigabit ports that support 9K jumbo frame feature. Therefore, the GSW-2401 can handle extremely large amounts of data transmission in a secure topology linking to a backbone or high-power servers.



## Brand-new Hardware DIP Switch for Functional Operation Modes Selection

The new GSW-2401 offers "Standard", "Flow Control Off", "VLAN" or "Extend" mode. The GSW-2401 operates as a normal Gigabit Ethernet Switch in the "Standard" operation mode.



The "VLAN" operation mode features port-based VLAN function that can help to prevent the connected clients' multicast or broadcast storm from influencing each other.

## Physical Port

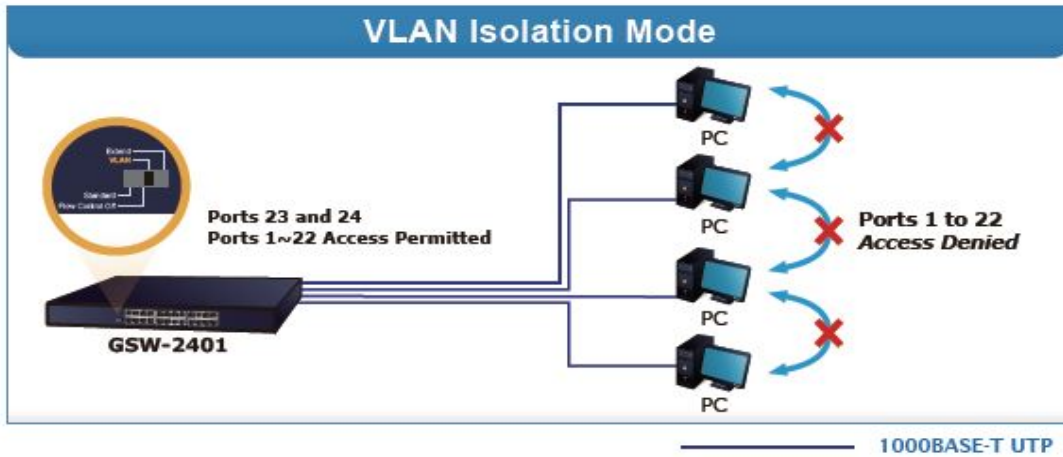
- 24 10/100/1000BASE-T Gigabit Ethernet ports
- Supports auto MDI/MDI-X function

## Layer 2 Features

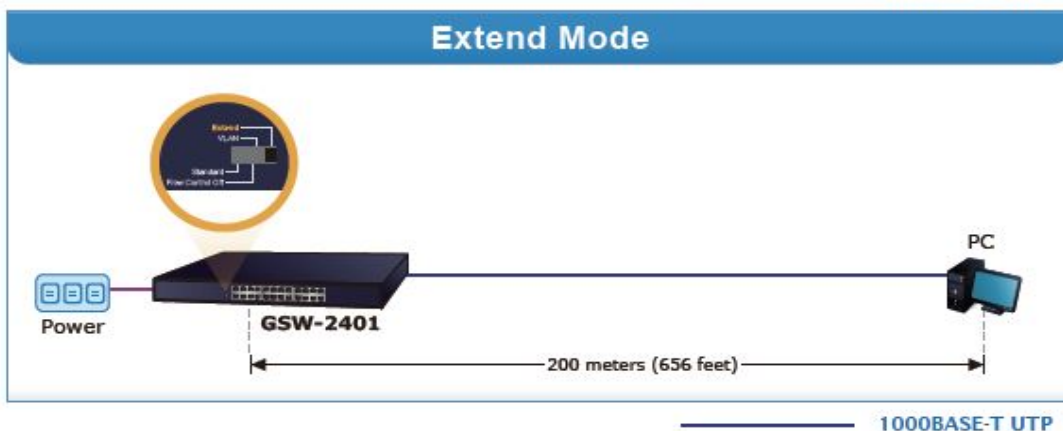
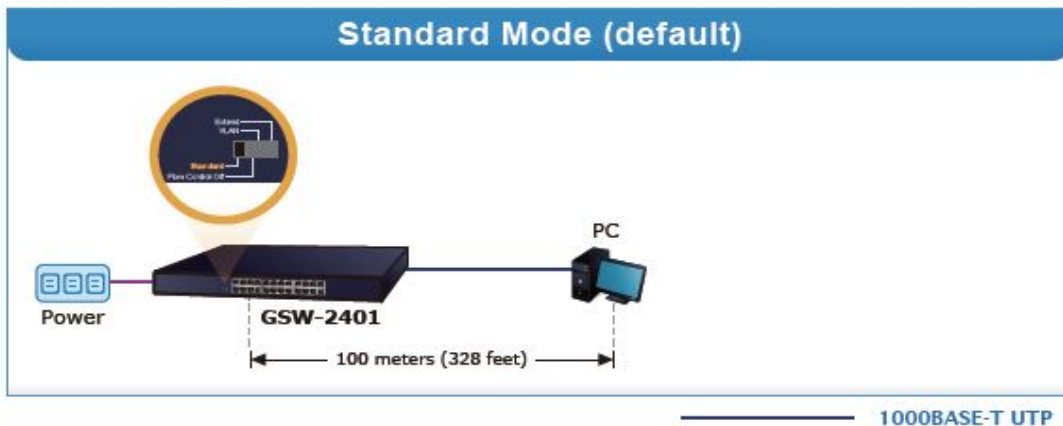
- Complies with IEEE 802.3, 10BASE-T, IEEE 802.3u 100BASE-TX, IEEE 802.3ab 1000BASE-T Ethernet standards
- Features Store-and-Forward mode with wire-speed filtering and forwarding rates
- Integrated address look-up engine, supporting 8K absolute MAC addresses
- 9K jumbo packet support
- Power saving ability for Green networking
- IEEE 802.1Q VLAN packet transparency support
- IEEE 802.3x flow control for full duplex operation and back pressure for half duplex operation
- Hardware-based 10/100BASE-TX, half/full duplex and 1000BASE-T full duplex mode, flow control and auto-negotiation
- Automatic address learning and address aging
- Supports CSMA/CD protocol

## Hardware Features

- 100~240V AC, 0.17A, 50~60Hz universal power input
- DIP switch for standard/flow control off/VLAN/Extend mode selection
- FCC, CE class A compliant



In the "Extend" operation mode, the GSW-2401 operates on a per-port basis at 10Mbps duplex operation but can transmit data over a distance of up to 200 meters overcoming the 100m limit on Ethernet UTP cable. With this brand-new feature, the GSW-2401 provides an additional solution for distance extension, thus saving the cost of Ethernet cable installation. Its VLAN isolation function isolates each port so as to prevent broadcast storm and defend DHCP spoofing in the "Extend" operation mode. thus saving the cost of Ethernet cable installation. Its VLAN isolation function isolates each port so as to prevent broadcast storm and defend DHCP spoofing in the "Extend" operation mode.



| DIP Switch Mode   | Function  |
|-------------------|---|
| Standard(default) | This mode makes the Gigabit Ethernet Switch operate as a general switch and all ports operate at 10/100/1000Mbps auto-negotiation.  |
| Flow Control Off  | This mode disables the Gigabit Ethernet Switch flow control function.   |
| VLAN              | This mode makes the GSW-2401 operate as a VLAN isolation switch and<br>1. Port 1 to port 22 will isolate respectively.<br>2. Port 1 to port 22 can only communicate with port 23 and port 24 (uplink port). |
| Extend            | This mode makes the GSW-2401 operate as a distance extension switch and port 1 to port 8 can only transmit distance of 200m at speed of 10Mbps.   |

### High Performance

The GSW-2401 provides a high-performance switch architecture that is capable of providing the non-blocking switch fabric and wire-speed throughput as high as 48Gbps, which greatly simplifies the tasks of upgrading the LAN for catering to increasing bandwidth demands. Besides, the Flow Control function of the GSW-2401 enables routers and servers to directly connect to the Switch for fast and reliable data transfer.

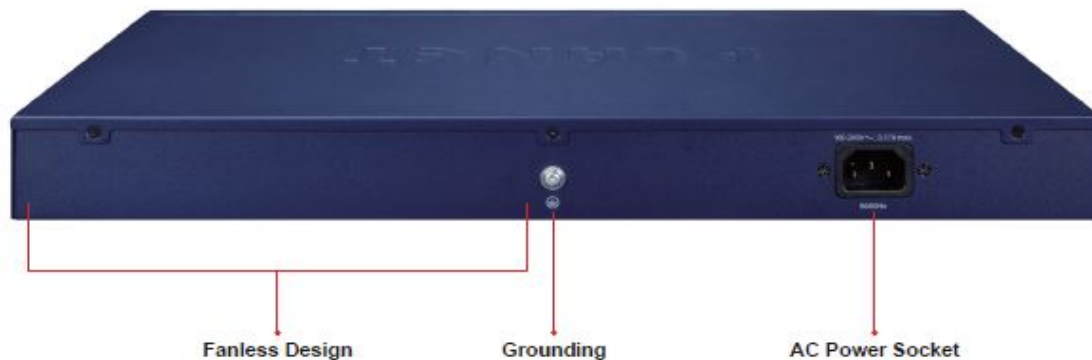
All the RJ45 copper interfaces of the GSW-2401 support 10/100/1000Mbps auto-negotiation for optimal speed detection through RJ45 Category 6, 5 or 5e cables. It also supports standard for auto-MDI/MDI-X that can detect the type of connection to any Ethernet device without requiring special straight or crossover cables.

### Excellent Traffic Transmission

The GSW-2401 supports Store-and-Forward forwarding scheme to ensure low latency and high data integrity, which eliminates unnecessary traffic and relieves congestion on critical network paths. With an intelligent address recognition algorithm, the GSW-2401 recognizes up to 8K different MAC addresses. The high data throughput and 48Gbps internal switching fabric make it ideal for most Gigabit environments, especially when network is upgraded to a Gigabit environment.

### Fanless Design

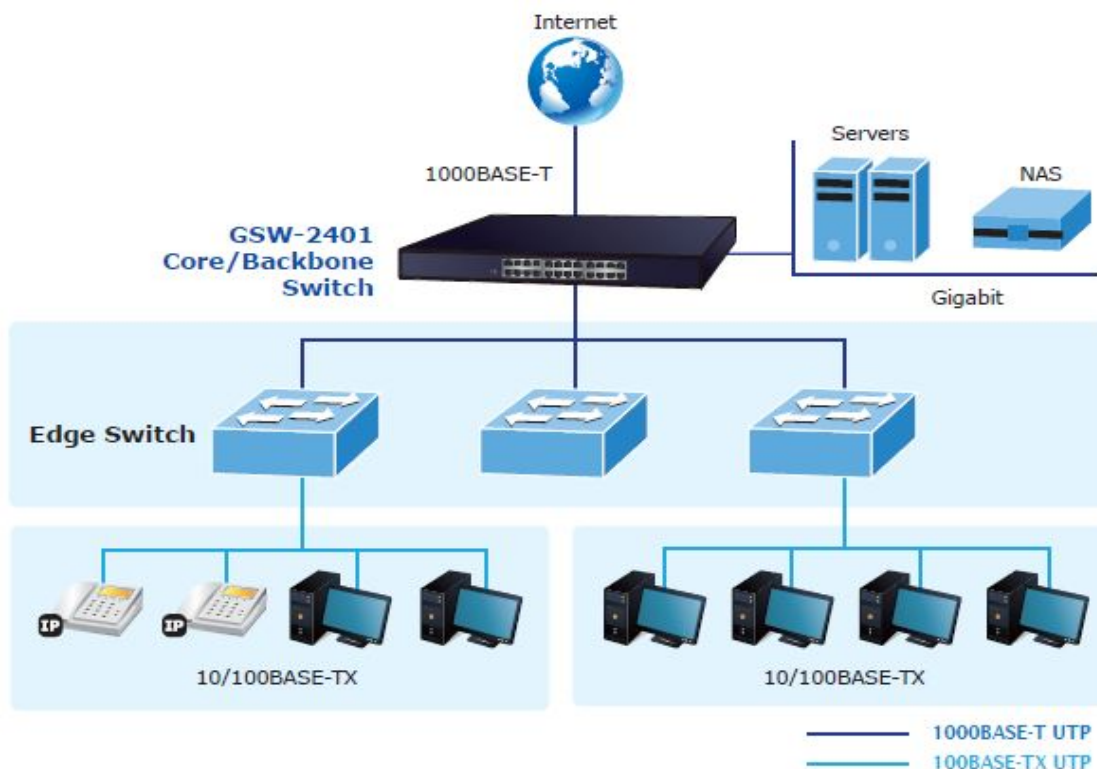
With its good ventilation design, the GSW-2401 is able to operate all along without a fan, thus reducing substantial power consumption and creating a noiseless environment. The GSW-2401 is definitely the best choice for any working environment without affecting its performance.



## Applications

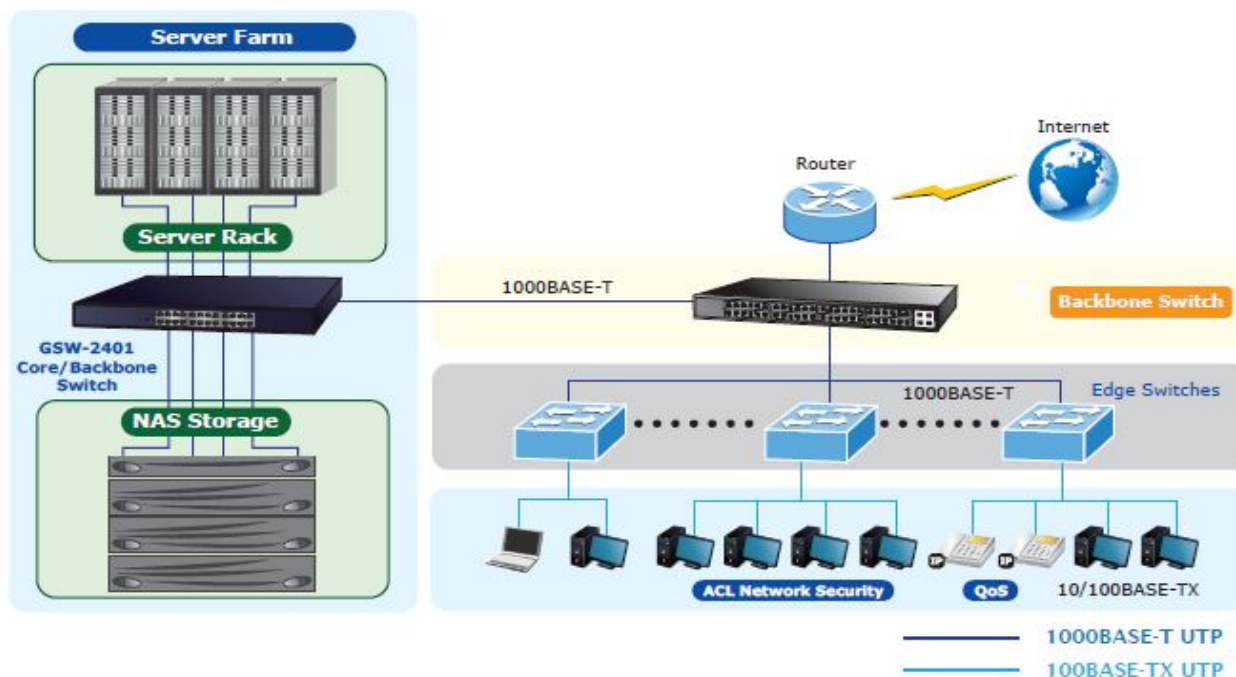
### Backbone Switch

With up to 48 Gigabits per second of non-blocking switch fabric, the GSW-2401 can easily provide high bandwidth for both today's and future requirements.



### Server Farm Switch

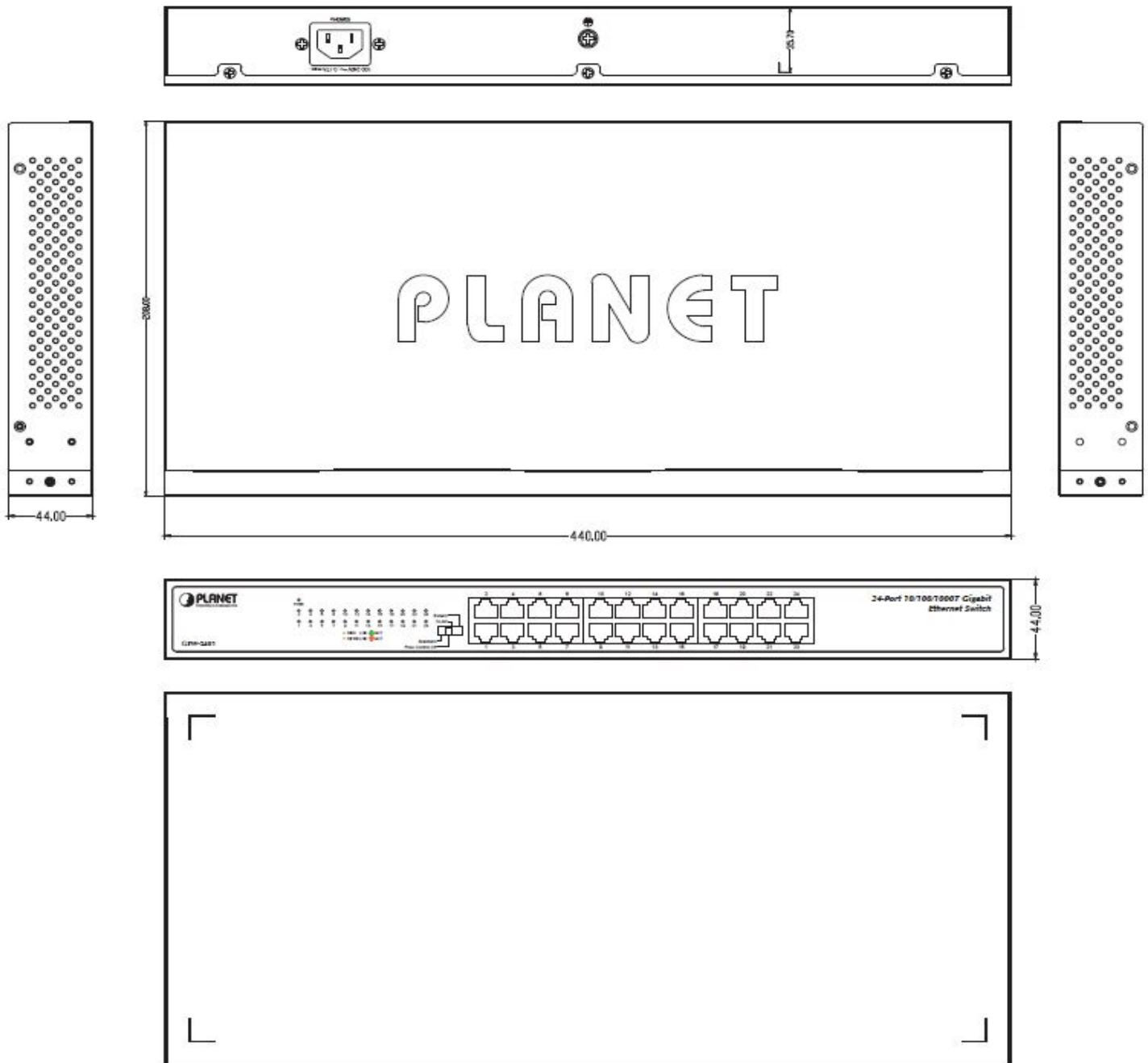
Providing 24 Gigabit Ethernet ports, the GSW-2401 is ideal to be used as a server farm switch connecting to your servers and powerful desktops.



## Product Specifications

|                                  |   |
|----------------------------------|---|
| Product                          | GSW-2401  |
| <b>Hardware Specifications</b>   |   |
| Hardware Version                 | 9   |
| 10/100/1000BASE-T MDI/MDIX Ports | 24  |
| DIP Switch                       | Operation mode selection<br><input type="checkbox"/> Standard<br><input type="checkbox"/> Flow control off<br><input type="checkbox"/> VLAN<br><input type="checkbox"/> Extend    |
| Weight                           | 1.9kg   |
| Power Consumption/Dissipation    | 14.6 watts/49 BTU   |
| Power Requirements               | 100~240V AC, 0.17A, 50-60Hz   |
| Dimensions (W x D x H)           | 440 x 208 x 44mm, 1U height   |
| <b>Switching</b>                 |   |
| Switch Processing Scheme         | Store-and-Forward   |
| Throughput (packet per second)   | 35.7Mpps  |
| Switch Fabric                    | 48Gbps  |
| Address Table                    | 8K entries  |
| Jumbo Packet Size                | 9K  |
| Flow Control                     | Back pressure for half duplex<br>IEEE 802.3x Pause frame for full duplex  |
| <b>Standards Conformance</b>     |   |
| Regulatory Compliance            | FCC Part 15 Class A, CE   |
| Standards Compliance             | IEEE 802.3 (Ethernet)<br>IEEE 802.3u (Fast Ethernet)<br>IEEE 802.3ab (Gigabit Ethernet)<br>IEEE 802.3x (Full-Duplex Flow Control)<br>IEEE 802.3az Energy Efficient Ethernet (EEE) |
| <b>Environment</b>               |   |
| Operating                        | Operating Temperature: 0~50 degrees C<br>Relative Humidity: 5% to 95% (non-condensing)  |
| Storage                          | Temperature: -10~70 degrees C<br>Relative Humidity: 5% to 95% (non-condensing)  |

## Dimensions



Unit: mm

## Ordering Information

|          |   |
|----------|---|
| GSW-2401 | 24-Port 10/100/1000BASE-T Gigabit Ethernet Switch |
|----------|---|

## Related Products

|          |   |
|----------|---|
| GSW-1601 | 16-Port 10/100/1000BASE-T Gigabit Ethernet Switch |
|----------|---|