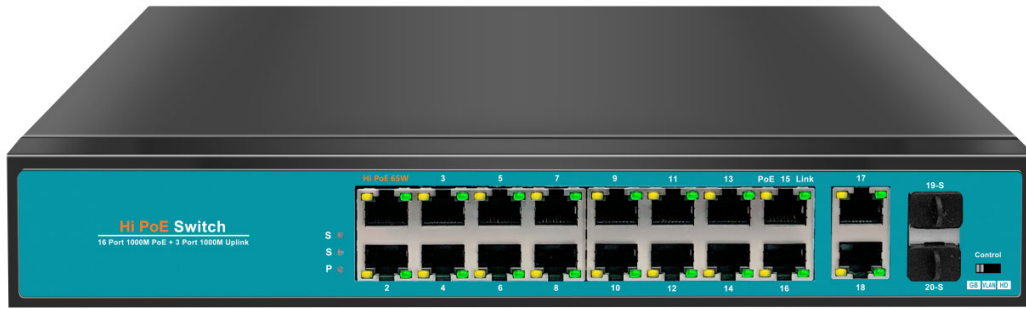


## 16\*1000M POE Port + 2\*Uplink 1000M UTP Port + 2\*1000M SFP Slot



### Description :

Smart POE Switch is a Power over Ethernet products, Its main features : No need configuration, Plug and Play, Strong compatibility, flexible expansion and Data packet will not dropout, Supply power and transmission data by an cable ,so as to achieve to transfer week voltage wiring safety, effectively solving the safety of power supply and construction, Saving the construction material, Speeding up construction process,saving the Labor cost and meeting the needs of various industries on POE switch.

The switch is built-in power supply, It have 16\*1000M POE Port +2\*Uplink 1000M UTP Port +2\*1000M SFP Slot ,It have one 65W HI-POE port ,2~15POE port can support IEEE 802.3af/a standard, Single POE Port can reach 30W ,Whole switch POE output power is 300W.

### Features

#### Interface :

- 16\*100/1000M high speed RJ45Port、 2\*100/1000Mbps RJ45 Uplink Port +2\* 1000M SFP Slot ;
- All port no-blocking and smooth data transmission
- All port support MDI/MDIX、 IEEE 802.3x full duplex flow control and Back pressure half duplex flow control

#### Smart PoE

- 1\*100/1000 Base-TX RJ45 Support 65W Hi-PoE ,Support 3-9in night vision camera and high power broadcasting equipment
- 15 \*100/1000 Base-TX RJ45 POE Port
- 1 ~ 15PoE port have self-detective IEEE 802.3af and IEEE 802.3at

Meet IEEE 802.3af /at PoE standard, Support auto recognition POE voltage by detection the voltage grade: Class0、 Class1、 Class2、 Class3、 Class4, No damage the POE equipment, Single POE Port can reach 65W(Hi-POE Port) ,Whole switch POE output power is 300W.

#### Smart PoE Function

- PoE port has watchdog function ,It can automatically restart power and resume data communication when the POE port detect the equipment no picture ,no data transmission or data is not smooth and crash,
- POE Port Powered on by the number order :1-16, Prevent no power on by instantaneous high voltage and protection the POE equipment
- CCTV Video priority transmission in 1~16 order
- Video monitoring mode switch on , 1-16port isolation , 17-20port can intercommunication with 1-16OE port, Can prevent DHCP conflict, optimize port cache utilization, reduce broadcast storm

### High standard PoE protection

- It has High frequency short circuit, open circuit, over current, over voltage, overload, surge, full port protection

### Easy using

- Plug and play, No configuration required, Easy to use and maintain
- Checking the working statuses by LED indicator : PWR, link/ACT, POE

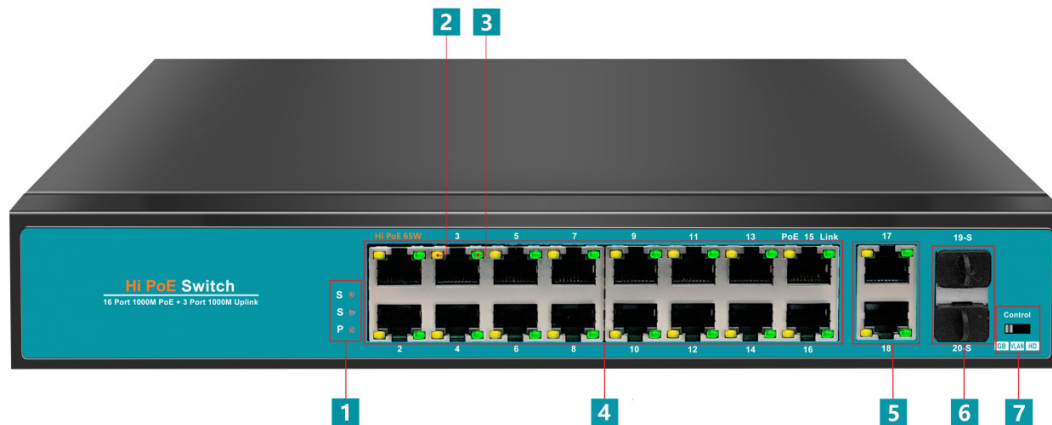
### Stability of the switch

- Switch Low power consumption, fanless silent design, galvanized steel and metal casing, excellent heat dissipation, ensuring stable operation
- 3C、CE、FCC、RoHS Certification

### Parameter

Model	ICB-6218GE-SFP	
Technical Parameters	Standard	IEEE 802.3 af/at use for Power-over-Ethernet
		IEEE 802.3 use for 10BaseT
		IEEE 802.3u use for 100BaseTX
		IEEE 802.3ab use for 1000BaseTX
		IEEE 802.3x flow control
Interface	Hi POE	1* 100/1000BaseTx support Hi POE 65W transmission and data communication
	POE	15*100/1000BaseTx support POE transmission and data communication
	RJ45 Uplink	2*100/1000BaseTx support multiplexed photoelectric data communication
	SFP Uplink	2*1000MBaseT(x ) support multiplexed photoelectric data communication
POE power supply pins	Default mode	V+, V+, V-, V-corresponding to 1236 (Endspan) AF/AT
	Optional	V+, V+, V-, V-corresponding to 4578 (Midspan) AF/AT
POE Features	Hi PoE	First Port:65W Support 3-9in night vision POE dome camera
	POE VLAN	Vlan on: PoE 1-16 no intercommunication, Suppress broadcast storm, Prevent POE port interference
	Watchdog	PoE port monitor for POE electric data , POE Port will restart automatically when no network data transmission
	PoE	IEEE802.3 af/at Protocol power supply , Default mode:1236 Optional mode :4578
	Active protection mechanism	Short circuit, circuit break, overload, overvoltage, overcurrent, undervoltage, surge
	Power protection mechanism	Powered on by the number order :1-16, Prevent no power on by instantaneous high voltage
Indicator	LED	P-System power, S-Fiber, Link-Link, PoE - POE power
Button	Default	POE Port share 1000M
	VLAN-ON	1-16port isolation no inter communication, 17-20port can intercommunication with 1-16OE port
	HD-ON	CCTV Data transmission first
Network	Network Medium	RJ45- Max 150M (unshielded twisted pair ) SFP ( Depend on SFP )

Characteristics	Switch Capability	56G	
	Package forwarding rate	40.32M	
	MAC database	8K	
	Forwarding Mode	Store and forward	
	Forwarder rate	10BASE-T	: 14880pps/port
		100BASE-TX	: 148800pps/port
		1000BASE-TX	: 1488000pps/port
MAC	Automatic learning		
Flow Control	Full Duplex IEEE802.3x flow control ; Back pressure half duplex back pressure flow control		
Power Supply	Input Voltage	AC220V Built in	
	Input Power	DC 48V 300W	
	POE Output Power	15.4W@IEEE802.3AF/30W@IEEE802.3AT/65W@IEEE802.3AT	
Other	Metal Case	IP30 Metal Case	
	Size	295 ( L)×195 (W)×45(H)	
	Weight	2.41 kg Including packing	
	Installing	Desktop installation /wall mounting / rack installation (optional)	



1. Indicator : S -Fiber uplink P-power
2. POE Power indicator
3. Network indicator -Downlink
4. 1-16 POE Port
5. UTP Upink
6. SFP Slot Uplink
7. Function Button: Network standard share/Vlan/CCTV First

**Order Information:**

Model	Description
ICB-6218GE-SFP	16*100/1000M high speed RJ45Port, 2*100/1000Mbps RJ45 Uplink Port +2* 1000M SFP Slot Built in300W Power Supply