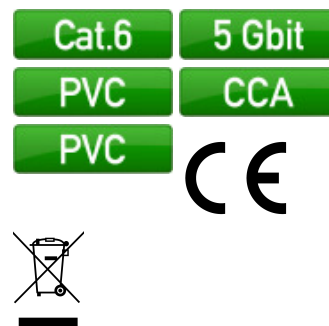


DATASHEET

RJ45 Patch cable U/UTP, Cat.6, PVC, CCA, white



Description

The unshielded Cat.6 RJ45 patch cable with ensures excellent performance for 5 Gigabit Ethernet applications. The moulded grommet captivates with its **slim design** and thus simplifies the insertion process in cramped conditions.

Cross section 4 x 2 x **AWG24/7**

Moulded grommet, slim design

Length imprint on the boot

General data

Category	6
Type of connector connection 1	RJ45 8(8)
Type of connector connection 2	RJ45 8(8)
Connector type	RJ45 Standard
Contacts	3 µ" gold plated
Pin assignment	1:1
Allocation	acc. TIA/EIA 568B
Type	Unshielded
Length imprint	yes
Anti-kink sleeve	moulded
Colour anti-kink sleeve	white
Locking lever	No

Mechanical characteristics

Bending radius	30 mm
----------------	-------

Cable construction

Cable structure	U/UTP
-----------------	-------

This datasheet was created automatically on 02-04-2021 . Technical changes reserved.



DATASHEET

RJ45 Patch cable U/UTP, Cat.6, PVC, CCA, white

Cable construction

Cable construction	4x2
AWG-size/strands per core	24/7
Conductor Material	CCA

Cable sheath

Silicone-free	yes
Jacket material	PVC
Colour outer sheath	white
Printing	Cat.6 UTP AWG24 stranded x 4pairs cable
Outer diameter of the cable	5.9 mm

Environmental conditions

Temperature range	-20 – 70 °C
-------------------	-------------

Electrical characteristics

NVP value	- %
POE class	PoE acc. to IEEE802.3af;PoE+ acc. to IEEE802.3at;4PPoE acc. to IEEE802.3bt

Transmission characteristics

Bandwidth	250MHz
Transmission	5Gbit

Standards, approvals, certifications

Connector	IEC 60603-7-4
-----------	---------------

Available variants

Article no.	Title	Length
K8100WS.0,25	RJ45 Patch cable U/UTP, Cat.6, PVC, CCA, 0.25m, white	0.25 m
Article no.	Title	Length
K8100WS.0,5	RJ45 Patch cable U/UTP, Cat.6, PVC, CCA, 0.5m, white	0.5 m
Article no.	Title	Length
K8100WS.1	RJ45 Patch cable U/UTP, Cat.6, PVC, CCA, 1m, white	1.0 m
Article no.	Title	Length
K8100WS.1,5	RJ45 Patch cable U/UTP, Cat.6, PVC, CCA, 1.5m, white	1.5 m
Article no.	Title	Length
K8100WS.2	RJ45 Patch cable U/UTP, Cat.6, PVC, CCA, 2m, white	2.0 m
Article no.	Title	Length

This datasheet was created automatically on 02-04-2021 . Technical changes reserved.

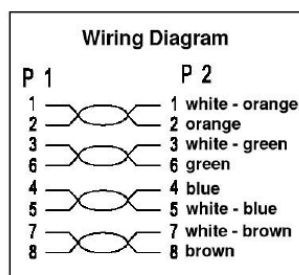
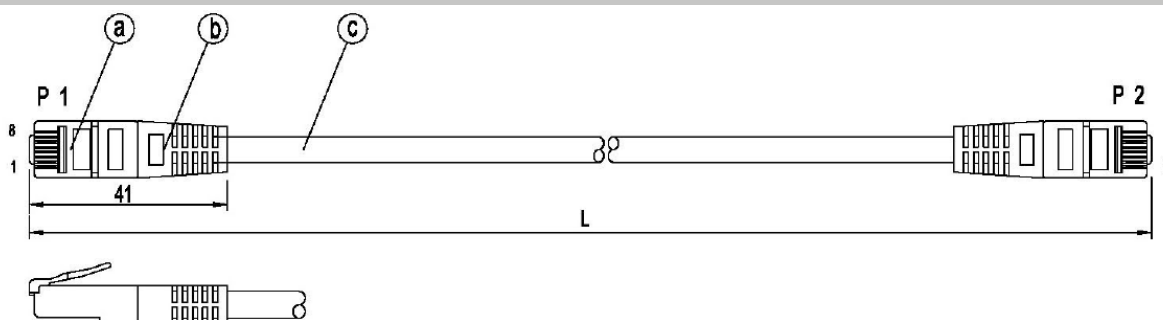


DATASHEET

RJ45 Patch cable U/UTP, Cat.6, PVC, CCA, white

Article no. K8100WS.3	Title RJ45 Patch cable U/UTP, Cat.6, PVC, CCA, 3m, white	Length 3.0 m
Article no. K8100WS.5	Title RJ45 Patch cable U/UTP, Cat.6, PVC, CCA, 5m, white	Length 5.0 m
Article no. K8100WS.7,5	Title RJ45 Patch cable U/UTP, Cat.6, PVC, CCA, 7.5m, white	Length 7.5 m
Article no. K8100WS.10	Title RJ45 Patch cable U/UTP, Cat.6, PVC, CCA, 10m, white	Length 10.0 m
Article no. K8100WS.15	Title RJ45 Patch cable U/UTP, Cat.6, PVC, CCA, 15m, white	Length 15.0 m
Article no. K8100WS.20	Title RJ45 Patch cable U/UTP, Cat.6, PVC, CCA, 20m, white	Length 20.0 m
Article no. K8100WS.30	Title RJ45 Patch cable U/UTP, Cat.6, PVC, CCA, 30m, white	Length 30.0 m

Technical drawings



Item No.	Color	Length (L)
K8100GR.x	grey	0,5m +/- 5mm
K8100MA.x	magenta (pink)	1m +/- 10mm
K8100WS.x	white	1,5m +/- 15mm
K8100GN.x	green	2m +/- 20mm
K8100BL.x	blue	3m +/- 30mm
K8100GE.x	yellow	5m +/- 50mm
K8100RT.x	red	7,5m +/- 75mm
K8100SW.x	black	10m +/- 100mm
K8100OR.x	orange	15m +/- 150mm
		20m +/- 200mm
		25m +/- 250mm
		30m +/- 300mm

similar product

K8100SW.1	RJ45 Patch cable U/UTP, Cat.6, PVC, CCA, black
K8100RT.1	RJ45 Patch cable U/UTP, Cat.6, PVC, CCA, red
K8100OR.1	RJ45 Patchkabel U/UTP, Cat.6, PVC, CCA, orange

This datasheet was created automatically on 02-04-2021 . Technical changes reserved.



DATASHEET

RJ45 Patch cable U/UTP, Cat.6, PVC, CCA, white

similar product

K8100MA.1	RJ45 Patch cable U/UTP, Cat.6, PVC, CCA, magenta
K8100GN.1	RJ45 Patch cable U/UTP, Cat.6, PVC, CCA, green
K8100GE.1	RJ45 Patch cable U/UTP, Cat.6, PVC, CCA, yellow
K8100BL.1	RJ45 Patch cable U/UTP, Cat.6, PVC, CCA, blue
K8100GR.1	RJ45 Patch cable U/UTP, Cat.6, PVC, CCA, grey

This datasheet was created automatically on 02-04-2021 . Technical changes reserved.

