

## Server Rack 800

### Heavy Duty IT Rack Cabinet

This is a unique server enclosure which is designed for housing heavy server & Networking systems, Server Rack cabinets are compatible with 19" rack mount equipment from all global manufactures including; DELL, Compaq, HP & IBM and, size range is between 26U to 47 U and the weight capacity up to 1500kg., provide secure storage for important rack mount equipment in high densities and data center environments, The structure of the Server Rack is suitable for usage of in-row data center cold/hot aisle.

Server Rack enclosure also designed to simplify equipment installation and maintenance including top and

bottom brushed panel cable ports, all models are equipped with locking doors to prevent unauthorized access, Enclosure is coming with 4 locking and removable side panels 2pcs left / 2pcs right, easily adjustable 19inch mounting rails are providing ability to count by Silk-screen U- Marking from top to down & down to up for easy device installation ,3 point high secure locking mechanism on the both of perforated front door and split rear doors, it is also allows ventilation and easy access in tight areas, 63% & 80% perforated doors are available as Flat or decorative Curved type , There are two main color in our standardized products Ral:7035 Light Gray and Ral:9005 Black.

Width=800mm Server Rack IT rack enclosure are designed for housing for housing heavy server , Switches and Networking system, cable management both horizontally or vertically positions

it is allows for cable management of the each side of 19" mounting rails with or without Vertical cable management block / Vertical cable management with sliding panel and its the simple, flexible and cost-effective way to organize your cable bundles and patch cords, The Cabins are optimized to meet the modern network and structured cabling requirements.



# Server Rack

Heavy duty IT Rack Cabinet



## Server Rack 800

### Heavy Duty IT Rack Cabinet

Quick-change fan tray allows accessibility without removing the cables or active devices from the rack in case of any maintenance or replacement needs.

**Server Rack top cover:** Server Rack Top panel has been designed for ventilation module which can be detached by removing 4 pcs screws from the top in case of maintenance or replacement needs, this is the type of roof commonly used for Data center application room.

**Protect your device against overheating by choosing the right fan module.**

We offer a wide product range of ventilation units with the different fan modules for the inner top.

On/Off switch Fan modules Analog & Digital Thermostat control unit Fan modules.



Additional to this feature; we are providing rear door Fan units which is compatible with the Server Rack cabinets



**Rear Door Perforation:** perforated front doors are same design Honeycomb perforation design, splitted rear door to allows ventilation and easy access in tight areas,



**Split Rear Door Ventilation 12 pcs** High performance Fan units are located on the rear door, The ventilation units are very important to keep the equipments cool inside the rack , Duty of the ventilation units are pulling the air through to the enclosure to maintain the front rear air flow commonly used.



# Server Rack 800

## Heavy Duty IT Rack Cabinet

### Construction details

#### Divided side panels

Easy removable divided side panels; It provides ease of use for users with its lightweight construction, in addition to this feature it is providing easy access to equipments for maintaining, replacing and managing cables, easy cable connection for side by side & in-row usage in Data center applications, 2 barrel locks and sliding latch locks being deployed on the side panels offers a combination of safety and aesthetics view both together.



#### Multi folded 19inch Mounting rails

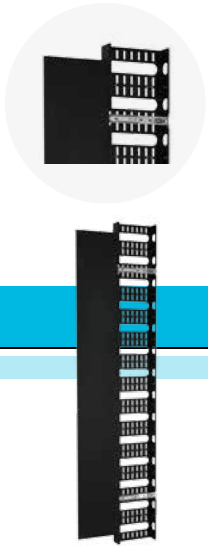
Equipment installation is quick and convenient with vertical mounting rails, adjustable throughout the entire depth of the cabinet and have very high carrying capacity with 2 mm thickness, Silk-screen mounting rails are providing ability to count U- Marking from top to down & down to up for easy device installation, Heavier equipment may also include horizontal rails or shelves that mount in the rack to provide extra support. If the equipment isn't made for rack installation, you can install a rack shelf to hold it as well.



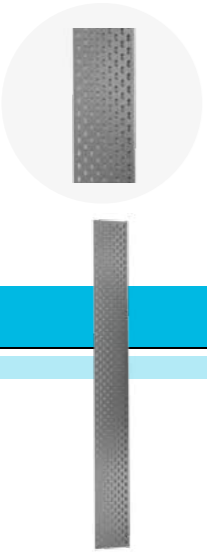
#### Multi folded 19inch Mounting rails

Side horizontal bars are designed for fasten to the vertical rack rails with screws, self tapping screw allows to adjust the rails throughout entire depth of the cabinet without need M6 cage nuts, It is also one of the important material that increase the robustness of the Server Rack cabinet.

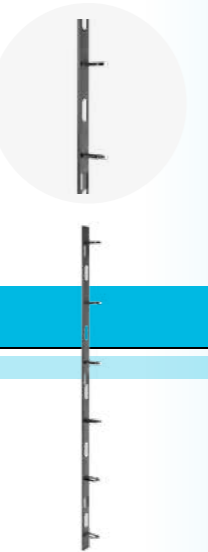
Vertical cable management with sliding cover



Vertical cable tray



Vertical cable tray with rings



Vertical cable management block



#### Top & Bottom cable entries

There are some key considerations to completing an world class job on cabling.

The cable complexity is one of the biggest problem of the installers,

- Undetectable cables
- Unmanageable cable bundles
- Tight and wrong cable entry paths

It is one of the most important factors that make it difficult to work during the high density cabling.

We have designed Gunko Server rack cabinet in order to avoid these problems with its large internal volume twin cable paths which is positioned on the left / right place inside the enclosure.

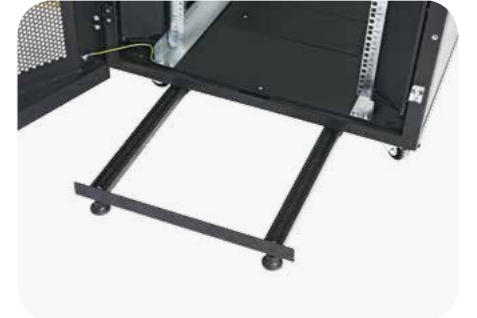
#### Benefits of the excellent cabling

- Proper cabling
- Easy cable tracing
- Easy cable replacing
- Easily removing hardware
- Increasing the airflow ability against the overheating devices because of wrong located cable bundles.



#### Anti tilt bar on the bottom case

Special structure heavy duty bottom case accommodates Anti tilt bar in order to eliminate unexpected work accidents due to it is quite heavy Server device structure.



### Castors

Castor and/or levelling feet could be mounted on to rack.



# Server Rack 800

## Heavy Duty IT Rack Cabinet

### High performance cooling

High-flow perforated front and rear doors provide optimum front to rear airflow to keep equipment cool and support hot & cold aisle configurations in server room and data centers, we are manufacturing different percent-open metal perforated doors as

63% and 80%allow for excellent airflow inside the rack, it is optimized to meet the needs of modern power and cooling requirements of High density applications. Multiple options are as follows; Curved single door, single flat door, splitted door, Low-Vented

single door (Low-vented front door provide an protection against the dripping and splashing water as well and we recommended the use of ventilated rear doors) All doors are quipped with 3 point locking system for sperior security



**RAL 9005 - Siyah (Standart Renk)**  
**RAL 7035 - Açık Gri (Opsiyonel)**

%80 Curved Perforated Metal Door-Single



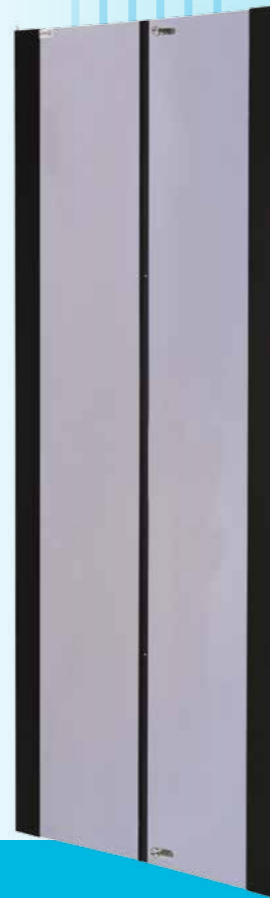
%63 Curved Perforated Metal Door-Single



Flat Metal Door-Double



Tempered Glass Door-Double



%80 Perforated Metal Door-Double



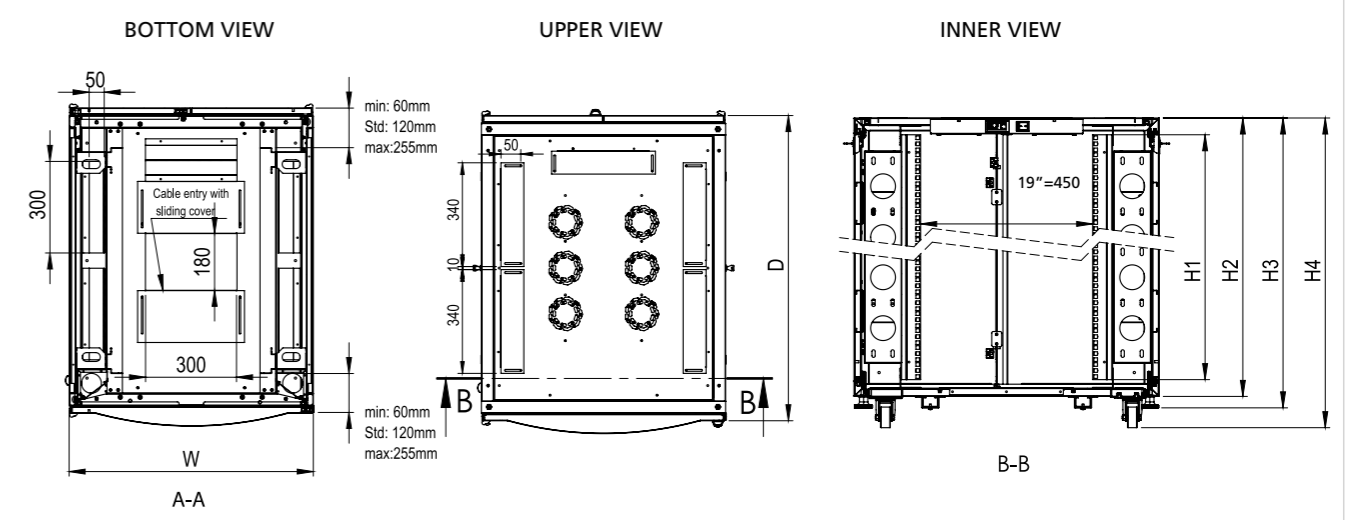
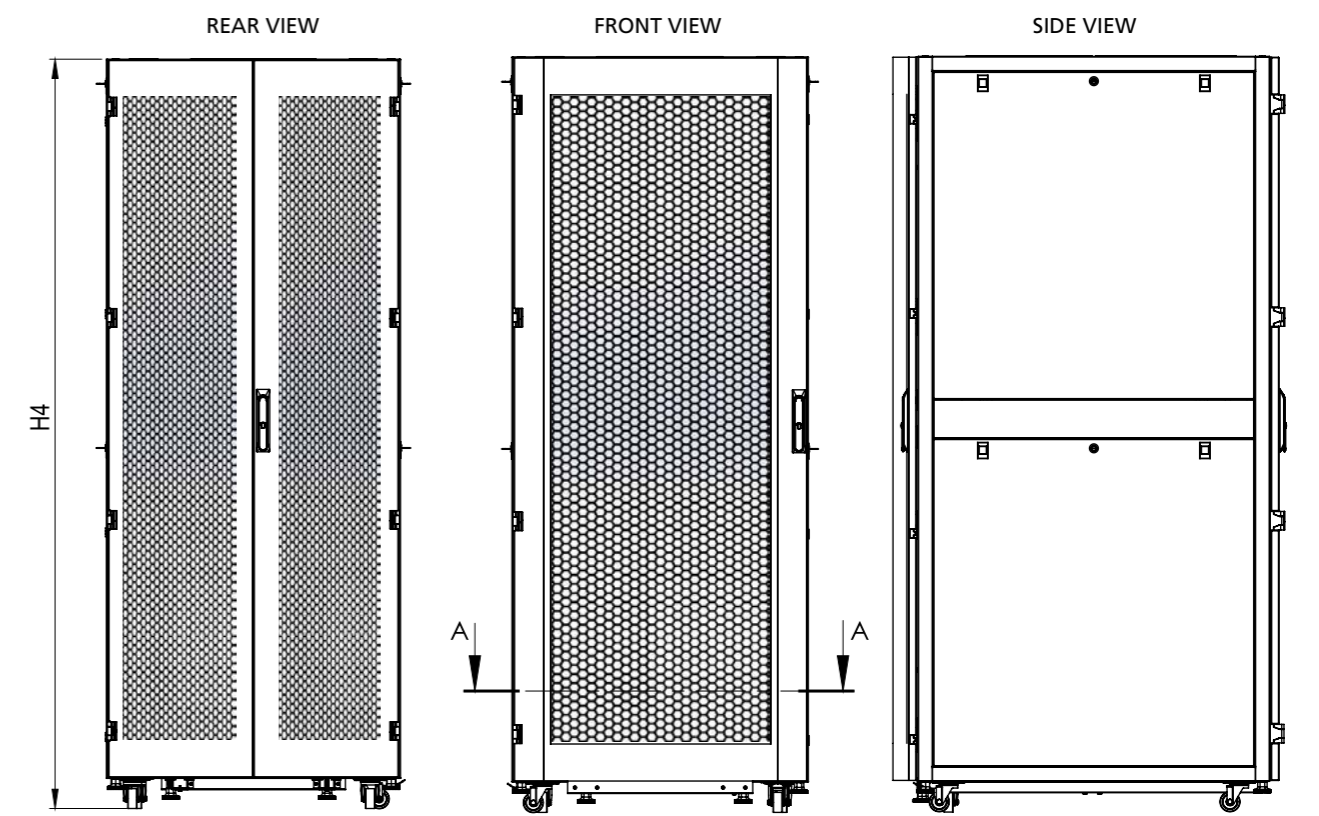
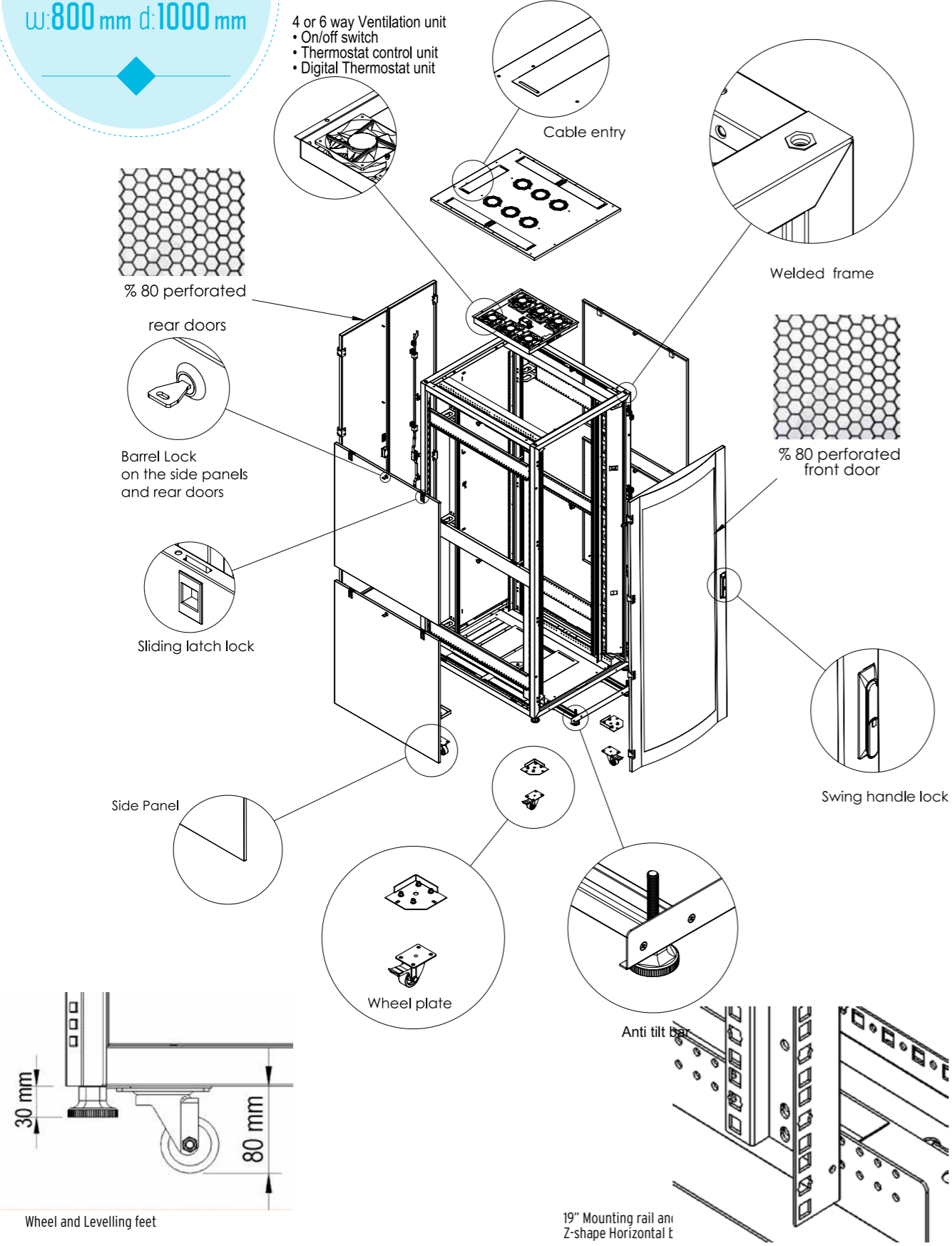
%63 Perforated Metal Door-Double



Flat Metal Door-Double



Technical Drawing  
w: 800 mm d: 1000 mm



800 x 1000 mm FLOOR STANDING SERVER RACK

Product Code	Product Description	Out Width (W) (mm)	Out Depth (D) (mm)	H:1 Inner Height (mm)	H:2 Out Height without feet & wheel set (mm)	H:3 Out Height with levelling feet (mm)	H:4 Out Height with wheel set (mm)
SVRK 32U 8010 CC 561	Server Rack 19" 32U W=800 mm D=1000 mm	800	1000	1425.6	1513.5	1543.5	1593.5
SVRK 36U 8010 CC 561	Server Rack 19" 36U W=800 mm D=1000 mm	800	1000	1603.4	1691.3	1721.3	1771.3
SVRK 42U 8010 CC 561	Server Rack 19" 42U W=800 mm D=1000 mm	800	1000	1870.1	1958	1988	2038
SVRK 45U 8010 CC 561	Server Rack 19" 45U W=800 mm D=1000 mm	800	1000	2003.4	2091.3	2121.3	2171.3
SVRK 47U 8010 CC 561	Server Rack 19" 47U W=800 mm D=1000 mm	800	1000	2092.3	2180.2	2210.2	2260.2

\*CC Means=Color Code, BL=Rail 9005 Black, LG=Rail 7035 Light Gray